

## Short stories

Ritaglio stampa ad uso esclusivo del destinatario, non riproducibile.

082928

IFDM | 197

**TAORMINA, ITALY | SAN DOMENICO PALACE | POLIFORM**

History, architecture, location. The San Domenico Palace in Taormina is made truly unique by a melange of factors that turn this Four Seasons hotel (owned by the Statuto Group) into a highly sought-after destination of boundless allure. It was even chosen as the set of the second season of the award-winning HBO series "The White Lotus." The San Domenico Palace is perched on a cliff over the Ionian Sea, in a Dominican convent dating to 1374, which was turned into a hotel in 1896 with the addition of an Art Nouveau-style building. Long a destination for the Grand Tours in Italy of nobility and illustrious personalities in arts and entertainment, it has welcomed the likes of Oscar Wilde, King Edward VIII, Elizabeth Taylor, Audrey Hepburn, and Sophia Loren. A recent renovation has made the hotel shine even brighter, with a joint design project with architect Valentina Pisani, who designed the indoor and outdoor spaces, Rosaria Catania Cucchiara, who oversaw the historical restoration, and landscape architect Marco Bay who redesigned the Italian gardens. The atmosphere of intimacy, lightness, and refinement (brought by the use of local materials and works of art) is expressed in its common areas and its culinary options alike. It has 111 rooms and suites, including the Royal Suite that opens onto a large terrace and a swimming pool overlooking Mount Etna, an ancient Greek theater, and the sea. Its uncommon ambience is heightened by the furnishings and interiors designed by Poliform Contract (to the design of the architect Valentina Pisani), which combines with an extensive array of loose furniture from its collection and custom-made designs for rooms, suites, and the roof bar.





SHORT STORIES

PROJECTS & HOSPITALITY



**ALBUFEIRA, PORTUGAL | W ALGARVE | KETTAL**

Owned by Marriott International and part of the W Hotels collection, the complex is composed of 134 rooms and 83 residences – not just a luxury destination, but also a reference point for local residents, open all year round. The angular profiles of the jagged rocky shoreline, the colors of crystal-clear water, the intense tones of a sunny climate have been blended by AB Concept with references to local crafts, creating an intimate, engaging image. “Our projects explore the interaction of contrasting elements: crafts and industry, large scale and intimacy, overall impressions and small details. We like our interiors to express time and place, cultural nuances, local traditions. We use rich materials to engage people on a sensorial and emotional level. A language that goes beyond decoration and becomes function.” All the rooms offer balconies with breathtaking views of the gardens and the Atlantic, including the ten WOW suites with roof terraces. The outdoor furnishings by Kettal interpret the intentions of AB Concept perfectly, making use of the Cala woven chair by Doshi Levien, items by Patricia Urquiola (Maia, Vieques, Band, Mesh and Vimini), the large Bitta chair and Boma sofa by Rodolfo Dordoni, the iconic Basket designed by Nanna & Jørgen Ditzel, the Park Life series by Jasper Morrison. Other zones welcome the Meteo umbrellas by Konstantin Grcic, the Mia lamps by Michel Charlot, the Zigzag decorative objects by Emiliana Design Studio, and the classicism of Net and Landscape, by Kettal Studio.



Ritaglio stampa ad uso esclusivo del destinatario, non riproducibile.

082928

IFDM | 199



**PUISSALICON, FRANCE | CHÂTEAU  
ST PIERRE DE SERJAC | SCAVOLINI**

Nestled among the infinite expanses of vineyards in the Languedoc, the Château St Pierre de Serjac estate consists of eight hotel rooms in perfect French style and 36 elegant private homes of varying sizes that were created out of the castle's original out-buildings. All the buildings are independent, equipped with gardens and terraces, and some have private heated pools. Domaine & Demeure, which led the luxurious project, chose Scavolini kitchens with cosmopolitan flair to imbue the classic architecture with contemporary attitude. Diesel Social Kitchen is an ultra modern kitchen in its design and modular components while featuring a vintage spirit that comes out in the choice of materials and unusual finishes. The international appeal of Carattere is expressed in its essential lines and refined finishes. LiberaMente features a minimalist design that eschews handles, enhancing the spaces' contemporary taste.



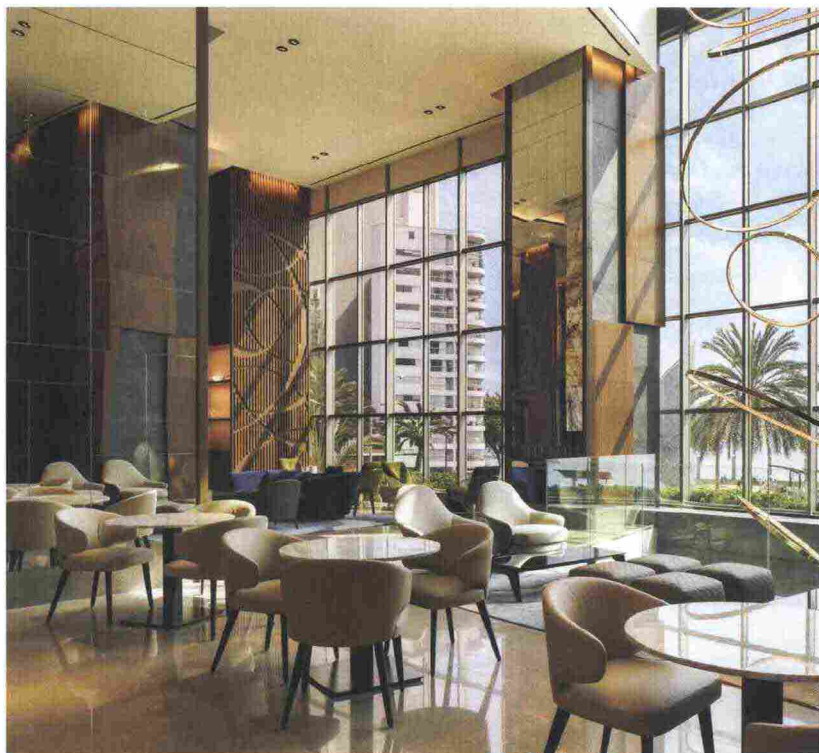
SHORT STORIES

PROJECTS & HOSPITALITY

**LIMA | JW MARRIOTT LIMA | MINOTTI**

The project by Raimundo Morales & Associates for the renovation of the public spaces drew inspiration from the geographic context of the Costa Verde. The texture of the cliffs, a mixture of rocks intertwined with green vines, was central to the material palette, as were the deserts of the north. The entire 14,000-square-foot public space on two floors was completely redesigned. The main challenge of the first floor was to reshape the lobby with a vertical stone wall on one side and a wooden screen on the other. The front desk area embraces a lounge area with the silhouette of the Tape family of seats by Nendo and the Close coffee tables by Rodolfo Dordoni. On the second floor there are three main design features: a custom-designed 22 x 140-foot geometric wall that reinterprets the Andes and dominates the space; a central bar designed as various loose elements, and a vertical fireplace. In the lounge bar the Leslie armchairs and the Seymour system, together with the Kirk Console, all by Rodolfo Dordoni, contribute to creating an intimate setting. As Lima is a coastal city, the material palette of the furniture is influenced by the colour of the sea, with touches of blue, green and grey. The lobby café welcomes the Angie armchairs by GamFratesi together with the Kirk Wood coffee table and the Ashley pouf by Rodolfo Dordoni. Next to them, the Aston Lounge little armchairs is the perfect match for all the lounge tables.

Photo © Juan Pablo Jaramillo



Ritaglio stampa ad uso esclusivo del destinatario, non riproducibile.

082928

IFDM | 201



**SINGAPORE | OSTERIA BBR | PEDRALI**

Established in 1896, the iconic Bar & Billiard Room (BBR) recently launched a new chapter of its legendary history in the Raffles Hotel in Singapore: the Osteria BBR. The vibrant, modern concept developed by Studio Jouin Manku is true to colonial architecture and maintains its distinctive tiled floor, while leading guests on a journey towards the sea, the light, and the flavors of the Mediterranean. Pedrali furnishings were chosen for the new spaces of the Osteria BBR whose kitchen will be headed by the illustrious chef Alain Ducasse. The well-lit interiors are warmed by the vibrant, elegant tones of upholstered armchairs and stools from the Ester collection, designed by Patrick Jouin, arranged around the open kitchen. The spectacular outdoor terrace is further enhanced by armchairs and lounge chairs from the Panarea collection, designed by CMP Design. Lightweight, cheerful, and elegant pieces feature a handcrafted weave for a beautiful look as well as graphic precision and a three-dimensional appearance.





SHORT STORIES

PROJECTS & HOSPITALITY



**HEILBRONN, GERMANY | EXPERIMENTA SCIENCE CENTER | CASALGRANDE PADANA**

Experimenta is an educational science museum for learning whose goal is to present natural sciences and technologies in an entertaining, easily accessible way. Its architecture underscores this mission with unconventional shapes that reflect an experimental approach to truly educating. The complex's extension was designed by the architectural firm Sauerbruch Hutton and involved adding a new unit that coils around itself for five floors in a helical sequence of glass and steel spaces. The relationship between the interior and the surrounding landscape is achieved through the interplay of the facade's transparencies, highlighted by well-matched interior flooring in porcelain stoneware from Casalgrande Padana, featuring a unique pentagonal shape. The collection of interiors slabs, in the Cool Grey, Medium Gray and Dark Gray colors creates a sophisticated dynamic quality in the large and airy exhibition spaces as well, in keeping with the entire building's outside structures.

Photo © Nicola Lanfranchi

IFDM | 203

Ritaglio stampa ad uso esclusivo del destinatario, non riproducibile.

082928

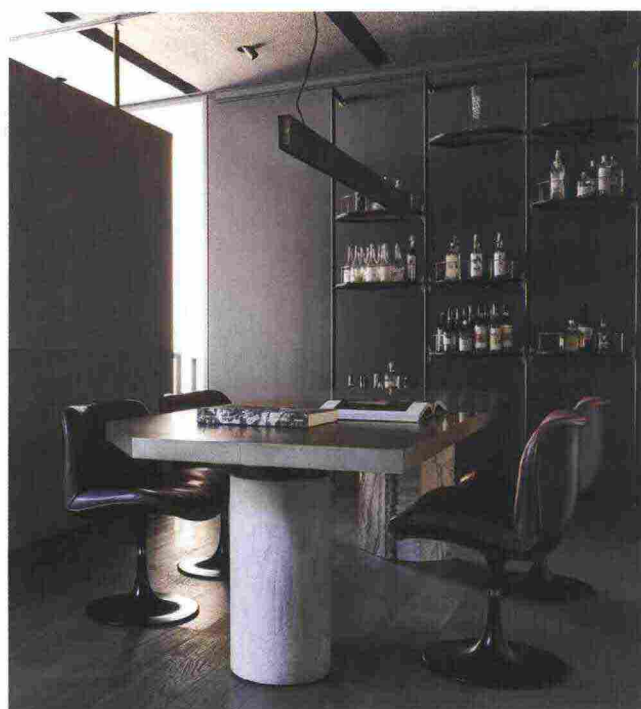


#### MILAN | MUDEC RESTAURANT | BAXTER

Art, design, taste. No ingredient is lacking to make for a sensory stimulating, unforgettable experience in Enrico Bartolini's three-star Michelin restaurant at MUDEC – Museum of Cultures in Milan. And now it is showing off a new renovated look designed by Baxter. Baxter gave expression to the desire for warm, classic, familiar spaces in an absolutely contemporary environment, creating an oasis whose convivial quality can be immediately perceived from the entrance lounge. A succession of bookcases, sofas, armchairs and coffee tables (including the Belt sofa and the modular solutions of Libelle) combine with materials like wood, leather, soft leathers in warm hues to create a home-like atmosphere of timeless elegance. The internal lounge has a more formal feel as translated in the design to a large wainscoting, color contrasts in cooler hues based on shades of navy and blueberry. This is also home to the ultra-lightweight Gemma chairs. Artworks on the wall, two photos and one painting, serve to mitigate the austere style. Though Chef Bartolini likes for the table where we eat to have its "uniform," with an ironed tablecloth and the right napkins, the important thing – according to him – is not to be a slave to etiquette: "We welcome sopping up the sauce with bread at the end, when it is done with gusto, because this creates a sense of trust between the guest and myself and the place." The culinary and style experiences continue on the patio that seems to immerse us in a tropical forest, beautifully matched with Baxter's outdoor collection, such as the iroko pieces, Himba and Hakuna Matata, with rough, natural textures in contrast to Dharma's lacquers. This eclecticism seals the sense of affinity between the company and the chef.

Photo © Fabrizio Cicconi

204 | IFDM



Ritaglio stampa ad uso esclusivo del destinatario, non riproducibile.

082928



SHORT STORIES

PROJECTS & HOSPITALITY

**MIASINO, ITALY | HISTORIC VILLA | ANTOLINI**

In the foothills of the Alps near Lake Orta, a historic villa from the late 1800s stands out as a protagonist in a renovation project by the Primatesta architecture firm and the interior designer Cristina Quirico. The renewal takes its cue from interpretation of existing architectural features, defining the indoor-outdoor connection in terms of the contrast between white and black. The choice has gone to two great classics and their decorative potential: the iconic Bianco Carrara and Nero Marquina marble varieties by Antolini, enhanced by a skillful dialogue with natural light that enters through large windows, reverberating from large terraces covered in an equally timeless material: Travertino. The external area of access to the villa features a checked pavement, where Bardiglio Imperiale marble in gray alternates with Bianco Carrara to accompany the gaze and the path towards the large glazing of the entrance door. The refined Lether Antolini matte finish gives the dark tones of black marble an unexpected modern boost, seen in the flooring of the kitchen, the dining area and the bathrooms, where the stone also rises to silkily cover the washstand and the vertical surfaces, in a harmonious dialogue with classic Bianco Carrara.



Ritaglio stampa ad uso esclusivo del destinatario, non riproducibile.

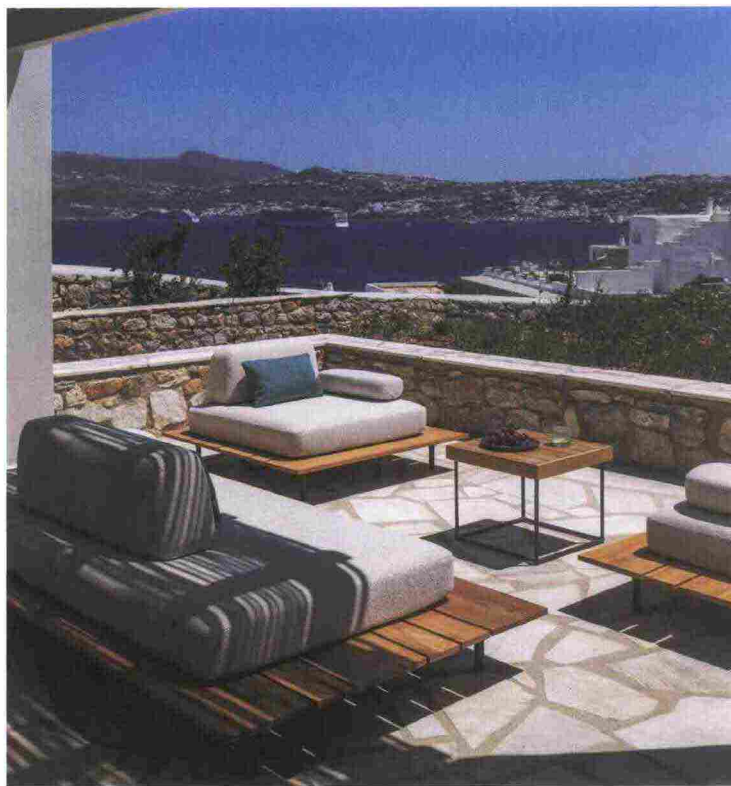
082928

IFDM | 205



**KANALIA, GREECE | MYKONOS ESTI LUXURY VILLA | ETHIMO**

Sophisticated and discreet luxury in the idyllic context of the Cyclades: the residential complex Mykonos Esti Luxury Villas, in Kanalia, overlooks the sparkling Aegean Sea from a magnificent hillside location, fitting into the natural setting in an extremely tactful way. The architecture convinces with its great simplicity and the honesty of stone, while the interior and outdoor design – by the studio Tsolakis Architects – offers moments of relaxation in the sun, for convivial gatherings or meditation, in three villas featuring different configurations and a relaxed mood enhanced by the furnishings of Ethimo. The protagonists of the spaces en plein air are the lounge furnishings of the new Calipso collection designed by Ilaria Marelli, the dining elements of the Ribot line by Marc Sadler, the Elle deck chairs and the Sand sun cots, along with the Free umbrellas, lounge chairs and coffee tables of the Allaperto collection designed by Matteo Thun and Antonio Rodriguez.





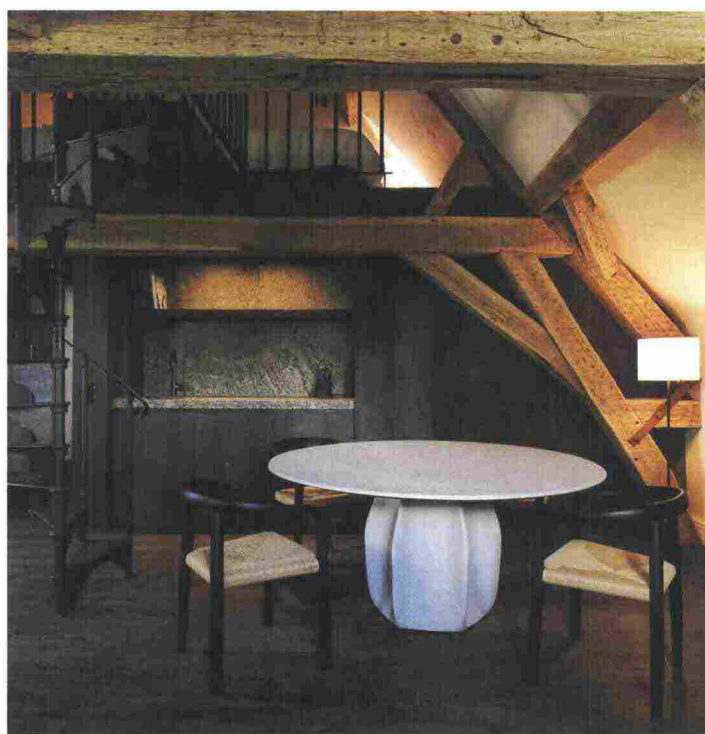
## SHORT STORIES

PROJECTS &amp; HOSPITALITY


**SAINT HUBERT, BELGIUM | CHÂTEAU DE MIRWART | MOLteni&C**

Located deep in the forests, Château de Mirwart dates back to the Middle Ages. In 2015, after years of being abandoned, the once grandiose monument had become dilapidated and vacant. Today, the fortress includes a classy hotel, a gourmet restaurant, a banquet hall, several conference rooms and a luxury spa. As much as possible of the spirit of the old castle has been revived, infused with modern elements, but with respect for the past. The castle building itself has 12 suites of varying sizes, ranging from 30 m2 for the smallest double room to 240 m2 for the ultra-luxurious Suite Impérial for 4 people. The former stables have been converted into 7 two-story lodges, each with two bedrooms. All suites are finished to perfection, oak floors, marble bathrooms, a fireplace in every room, authentic elements everywhere you look. No two suites are the same, but all have the same high level of comfort and finish. Molteni&C took part in this project furnishing different areas of the castle, such as the Salon blue reception bar, the Salle Polyvalente, the Petit Salon, the restaurant and the billiard room, as well as the castle suites and the stable suites and dépendance. Interior spaces are enriched with pieces of the Molteni&C collection: the Lucas sofa, the Elain, the Walter and the Gillis armchairs, the Louisa coffee tables, the Hector library and the Adrien sideboard, all designed by Vincent Van Duysen. The interiors harmoniously integrate other iconic Molteni&C products: the D.859.1 table by Gio Ponti, the Surf sofa by Yabu Pushelberg, the Asterias table by Patricia Urquiola, the AVA table by Foster+Partners and the Devon chairs and armchairs by Rodolfo Dordoni.

Photo © Loik Evers, Max Zambelli

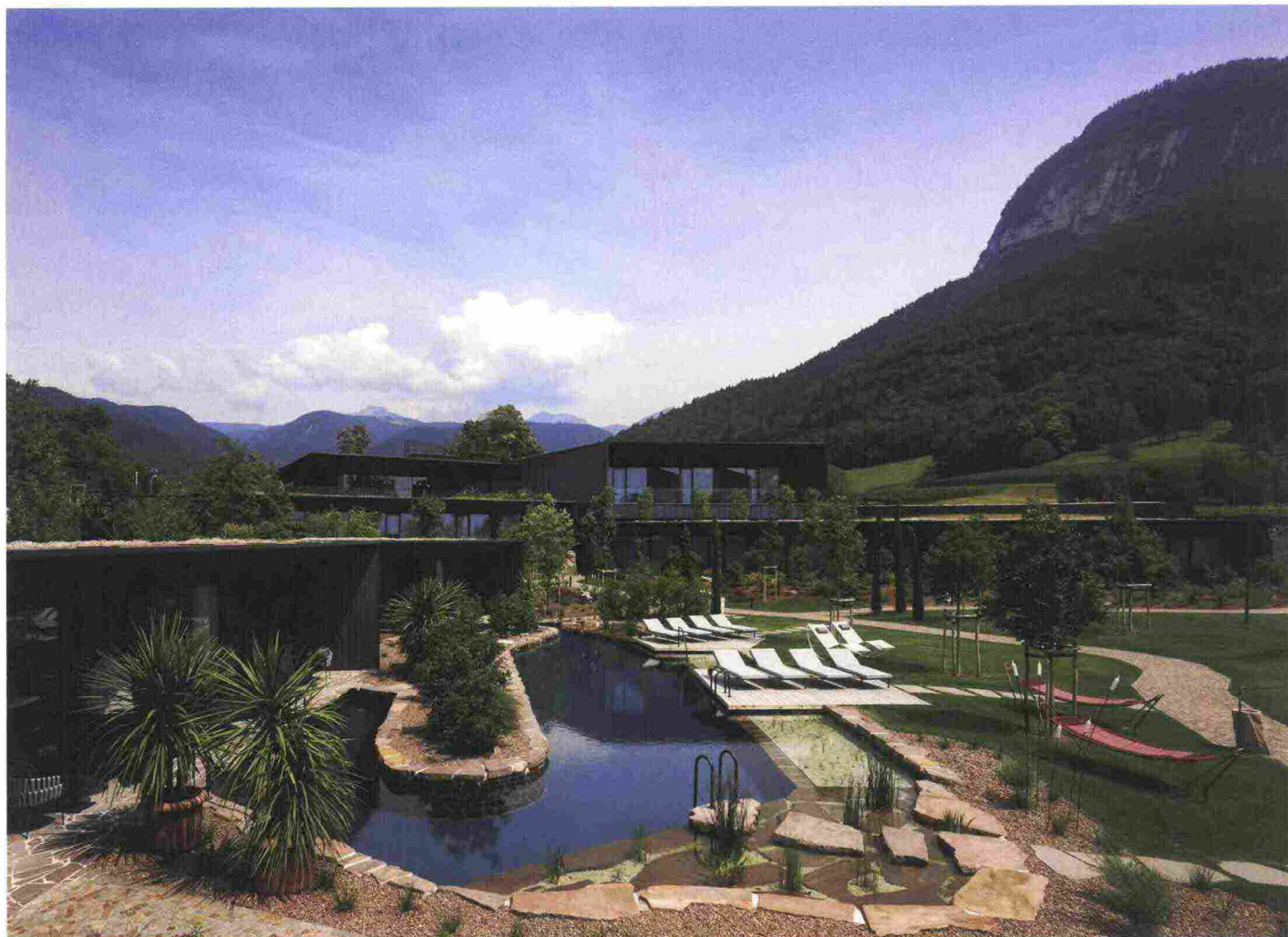


Ritaglio stampa ad uso esclusivo del destinatario, non riproducibile.

082928

IFDM | 207

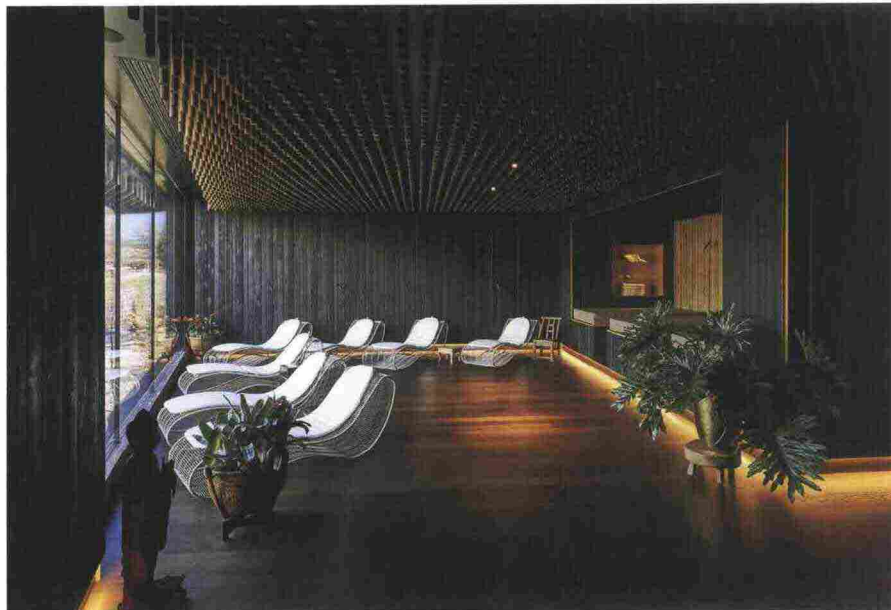




**MONTAGNA, ITALY | MANNA RESORT | TALENTI**

Manna Resort is an exclusive 5-star resort in Montagna, on the slopes of the Monte Corno Natural Park. It was designed by the architect Klaus Gummerer for Studio Pichler Architects with the designer Enrico Moretti of Studio Moretti Interiors. The minimalist architecture develops over several buildings with large windows that frame the mountain peaks and maintain a visual dialogue between inside and outside, and original rooms with geographic themes featuring a minimal-chic style, three chalets, two restaurants, a spa, and elegant relaxation areas combining Western and Eastern traditions in the details and furnishing pieces by Talenti. The iconic Breez sunbed by Karim Rashid with its cosmopolitan pizzazz, is a perfect fit for the spa, interplaying with the water reflections through its steel base. While the outdoor spaces are beguiling with a magical, enveloping mix of powerful, contrasting reds, the Panama, Cliff chairs or the Tribal lamps are in the more neutral colors of Riviera, Frame and Casilda and the dove gray of Breez.

208 | IFDM





**SHORT STORIES**

PROJECTS &amp; HOSPITALITY

**NEW YORK | RHEINGOLD-BUSHWICK  
CERAMICHE REFIN**

Designed by Studio Durukan Design and awarded at the Tile Competition 2022 at Coverings, Rheingold-Bushwick is a social project before it is an architectural one. With its 35,000 square meters, 500 apartments and 6 amenity zones, the new residential complex is a place for socializing that encourages the active involvement of its residents while remaining true to the influences of the art scene and the industrial roots of northern Brooklyn in its atmosphere. Right over the threshold, the double-height atrium had a central hub with reused iron containers turned into gathering areas with brightly colored ottomans, and graffiti painted by local artists that evoke the colorful neighborhood alleys. Ceramiche Refin's collections – chosen in different sizes both for the common space flooring and for the cladding of some walls – perfectly convey the underground style and emphasize the project's eclectic feel. Design Industry, in an Oxyde finish selected in the two dark and light versions, suggests the patinated effect of oxidized metals; Plant appears as a wood-cement with a shabby chic style also seen in the Ash color.



Ritaglio stampa ad uso esclusivo del destinatario, non riproducibile.

082928

IFDM | 209

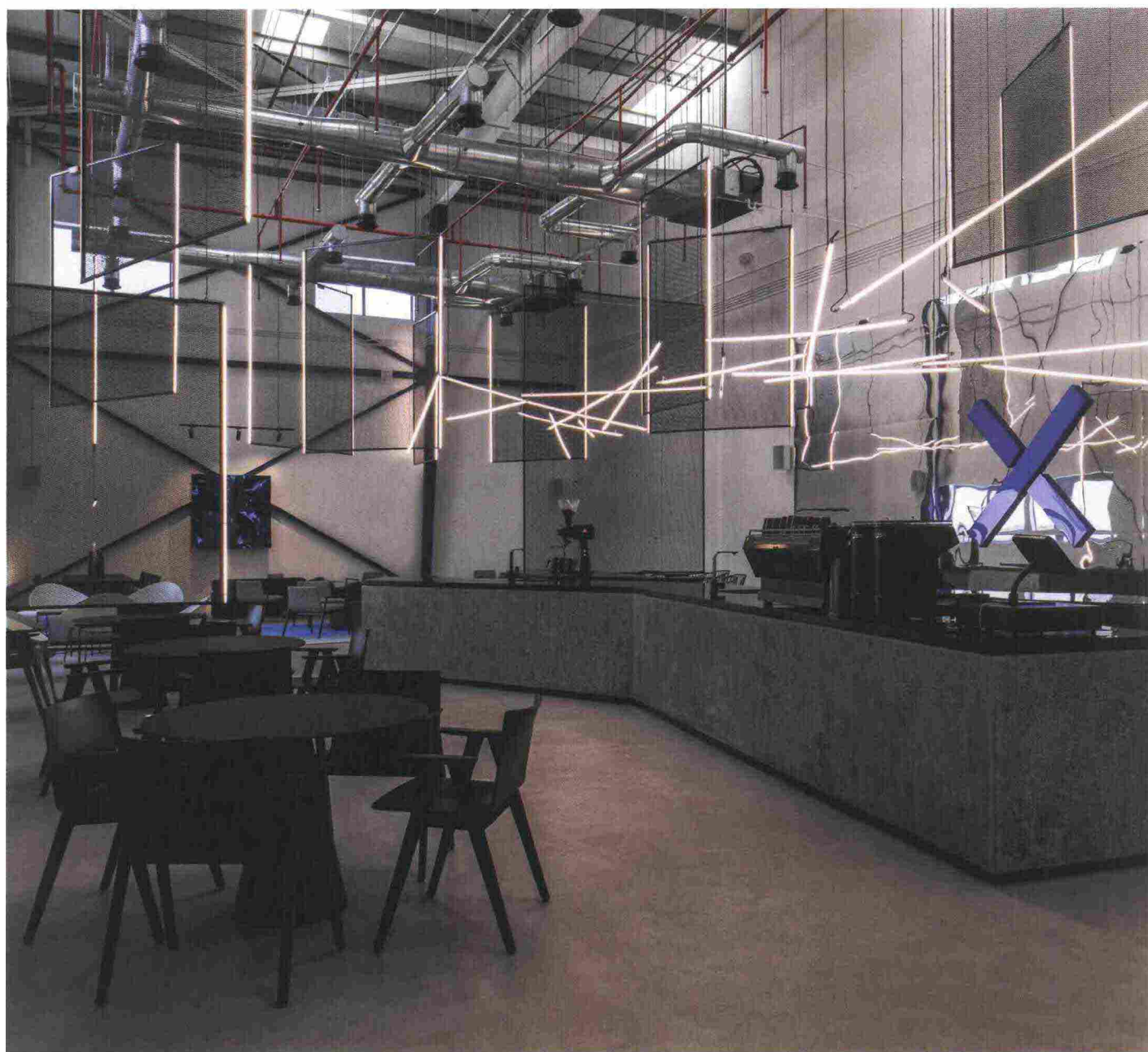


## KILAWANEEJ, DUBAI | CROSS CAFÉ | NEMO LIGHTING

Under the guidance of Creative Director Vera Edith Dieckmann XO Atelier's team brought to life the creative vision of the young Emirati owner whose deep strive was to realize a unique meeting place-to-be for the young generation in the spacious and iconic location, a former warehouse. The wide size of the 285 sqm open space and the 9 meter high ceiling stay intact connecting the new space to its tradition and surrounding. Connection and exchange are symbolized by the slant cross which became the underlying design concept that focuses on clear geometric lines overlapping and crossing each other. The white walls are building the frame for a high contrasting color concept of black and white furniture with strong accents in ultramarine blue, highlighting the warehouse's supporting structure as well as selected furniture and the bespoke blue metallic artwork. The randomly arranged and intersecting linear light tubes by Nemo Lighting hover above the bar finding their shaky reflections in the mirrors behind. The additional huge airy space is given structure with rectangular black metal mesh screens which are hanging vertically filling the enormous room height in a lightweight and artful way. The screens are highlighted with perpendicular linear tube lights by Nemo Lighting, visualizing and connecting the ceiling to the coffee space.



Photo © Sergei Nekrasov



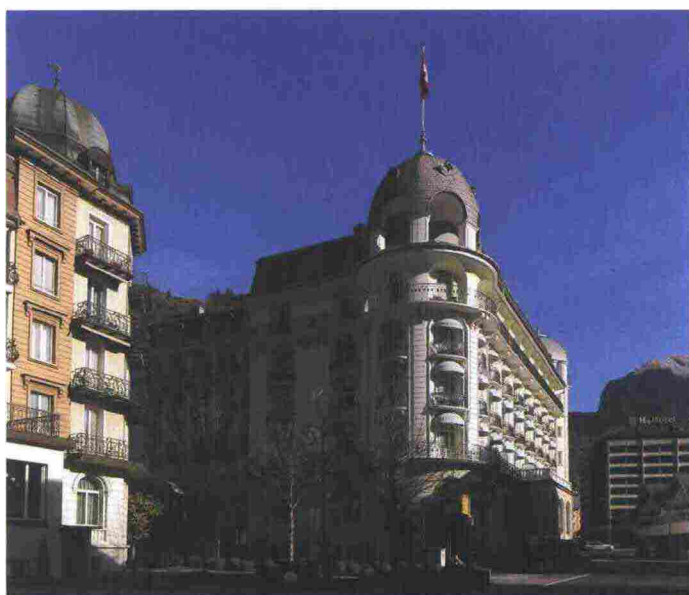
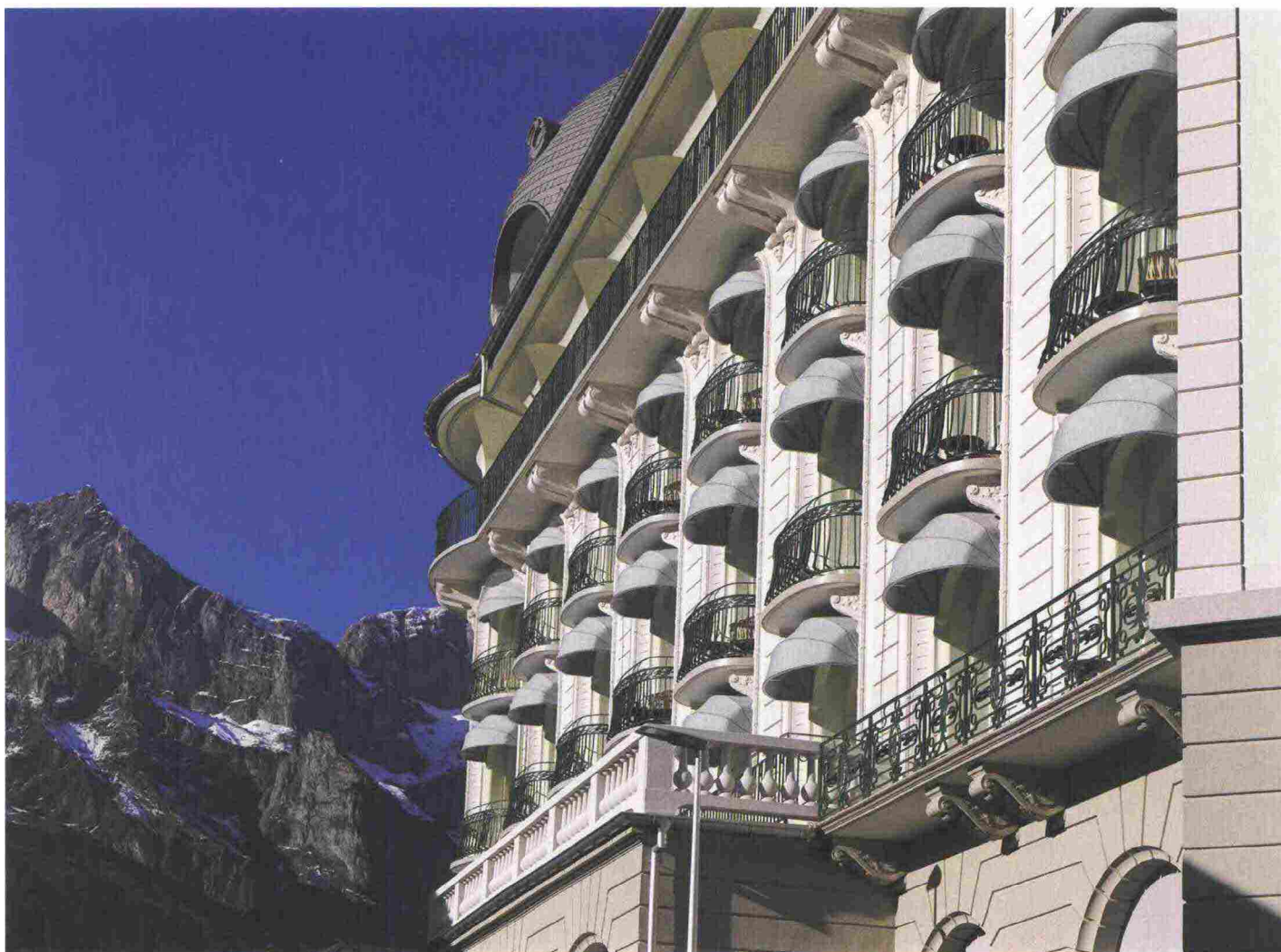
Ritaglio stampa ad uso esclusivo del destinatario, non riproducibile.

082928



SHORT STORIES

PROJECTS & HOSPITALITY



ENGELBERG, SWITZERLAND | HOTEL KEMPINSKI PALACE | PRATIC

Recently undergoing conservative restoration by Iwan Bühler Arch.büro GmbH and Biscontin Arimo AG, the Hotel Kempinski Palace Engelberg, in the Swiss Alps, once again emanates a total Belle Époque atmosphere. In this 5-star hotel built in 1904, every detail maintains its original charm, including the sun awnings that had long distinguished the architecture's silhouette stretching over its three central floors and have now been brought back. Selene Pratic awnings were chosen to protect the balconies of the 89 suites. This 1960s invention of the Friuli-based Pratic still creates a sophisticated aesthetic. The rounded shape of the awnings in the technical fabric in white and green blend yarn shade the balconies, which are furnished with chair and tables, as well as the room interiors. Though the design has been unchanged over time, their performance is decidedly innovative. Fully automated and connected to the hotel's automation system, the awnings have weather sensors and Flexcontrol patented devices that absorb the wind force, making use of a system of flexible bearings on the arm brackets.

Photo © Silvan Bucher

Ritaglio stampa ad uso esclusivo del destinatario, non riproducibile.

082928





### **COPENHAGEN | HAPI HOUSE | MERIDIANI**

Located in a prestigious brick-building not far away from the royal palace, the apartment, a project by Christine Callsen, wholly develops the theme of colors: in every room, hints of pink and yellow convey a vibrant atmosphere. There's no formula for interior decoration, and Hapi House is an invitation to individuality— a path to create meaningful and personal spaces. In the sitting room, the white Louis sofa plays in a scheme of colors with the Cecile and Keeton Fit armchairs and with the reflections of the Belt low tables with mirror tops; the Adrian and Hardy low tables boast an unprecedented pink-lacquered version. In a corner, the Bongo low table with bronzed top is set next to the Josephine armchair which plays the role of the protagonist, covered up in bubble-pink velvet, same as the Belmon small armchairs – suddenly smoothened in their rigorous shapes; in the same space, the Harold elements in white mark their space with their modularity. The Lenny Fit sofa in its pure elegance is made less serious by the colorful cushions.

Photo © Davide Lovatti





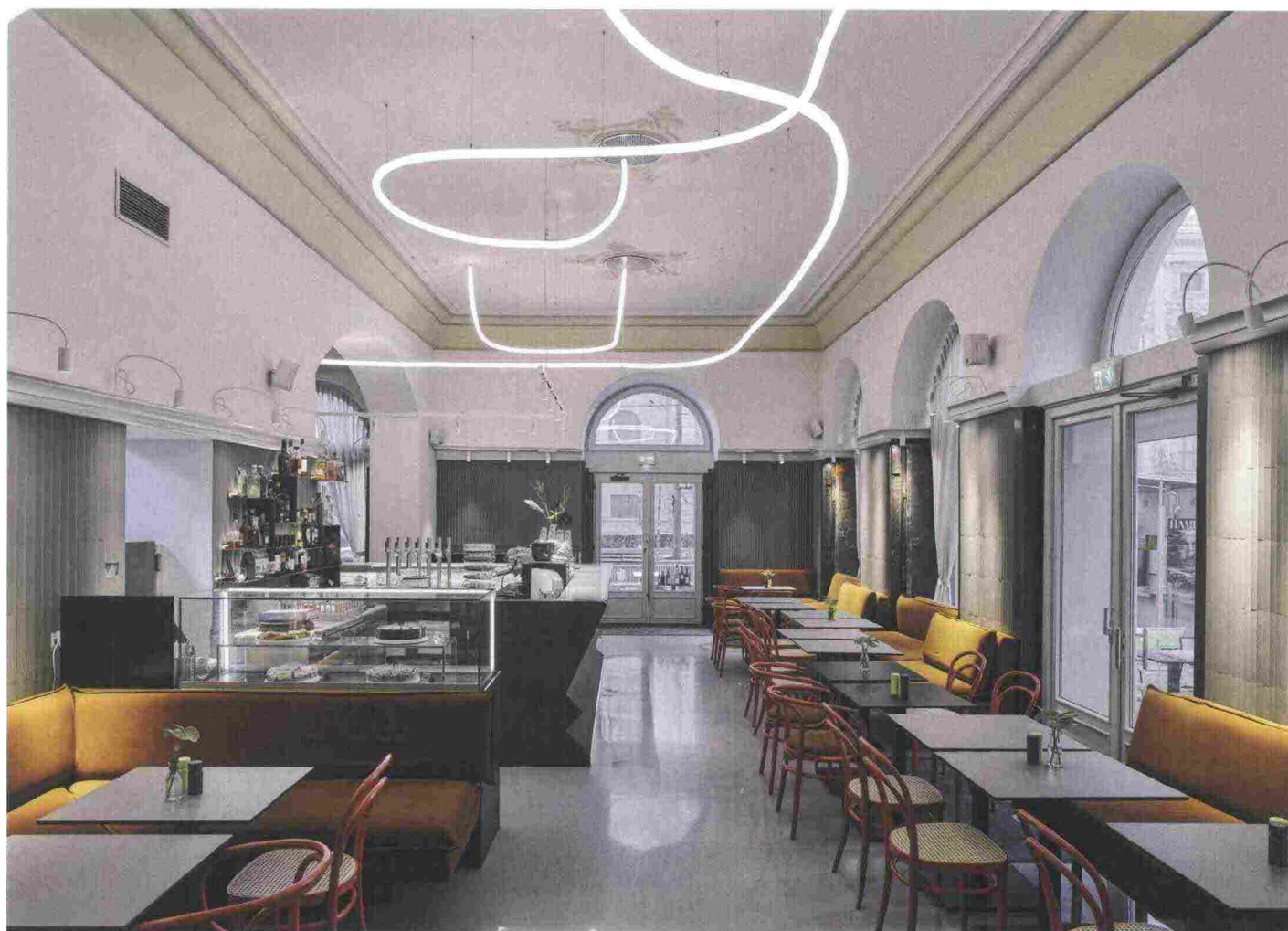
SHORT STORIES

PROJECTS & HOSPITALITY

VIENNA | CAFÉ BELLARIA | THONET

BÜRO KLK architects recently undertook on the challenging task of renovating the interiors of the legendary Viennese café Bellaria, the oldest in the city (1870) and a gathering point for writers, artists, and leading voices of the culture, economics and politics of the time. The thorough renovation brought a touch of modernity, while respecting its traditional identity, as evidenced in the new monolithic lava stone counter and in bright, sinuous sculpture. The iconic bent wood chairs of the 209 and 214 collection (formerly n.14) by Thonet were a must, in the modern bright coral red version combined with the evergreen Vienna straw.

Photo © David Schreyer



Ritaglio stampa ad uso esclusivo del destinatario, non riproducibile.

082928

IFDM | 213



**MILAN | RESTAURANT 13.10 | HDSURFACE**

The wit of the Milanese designer Serena Confalonieri meets the culinary philosophy of chef Marcello Passoni in the new boutique restaurant 13.10. Its intimate, inviting space stretches around a classic Brianza inner courtyard. Its spaces are deftly arranged through soft contrasts balancing patterns and colors with select furnishing pieces and custom-made items to create a home-like, convivial atmosphere. For the ceilings and most of the walls of 13.10, the designer chose products from the Argille collection from HDSurface, which specializes in producing continuous surfaces. A completely natural brushed cladding, with irregular appearance and depth, porous and velvety to the touch is achieved by combining clay, plant cell fibers, natural limestone, and micronized marble powder. A variety of colors embrace and infuse warmth into the interiors and are made from the mixture of colored earths and oxides favoring hues from pink to beige and green to gray as well as white.

Photo © Matteo Imbriani

